



CONTROLMATIC

PRESENTACIÓN

2024

CONTROUMATIC

B

B

B

- c
- v
-
- c

BB B B B BBB B B B B
B B B BB B B
B BB B B B B
B B BB BB B B B
B

h

B

B

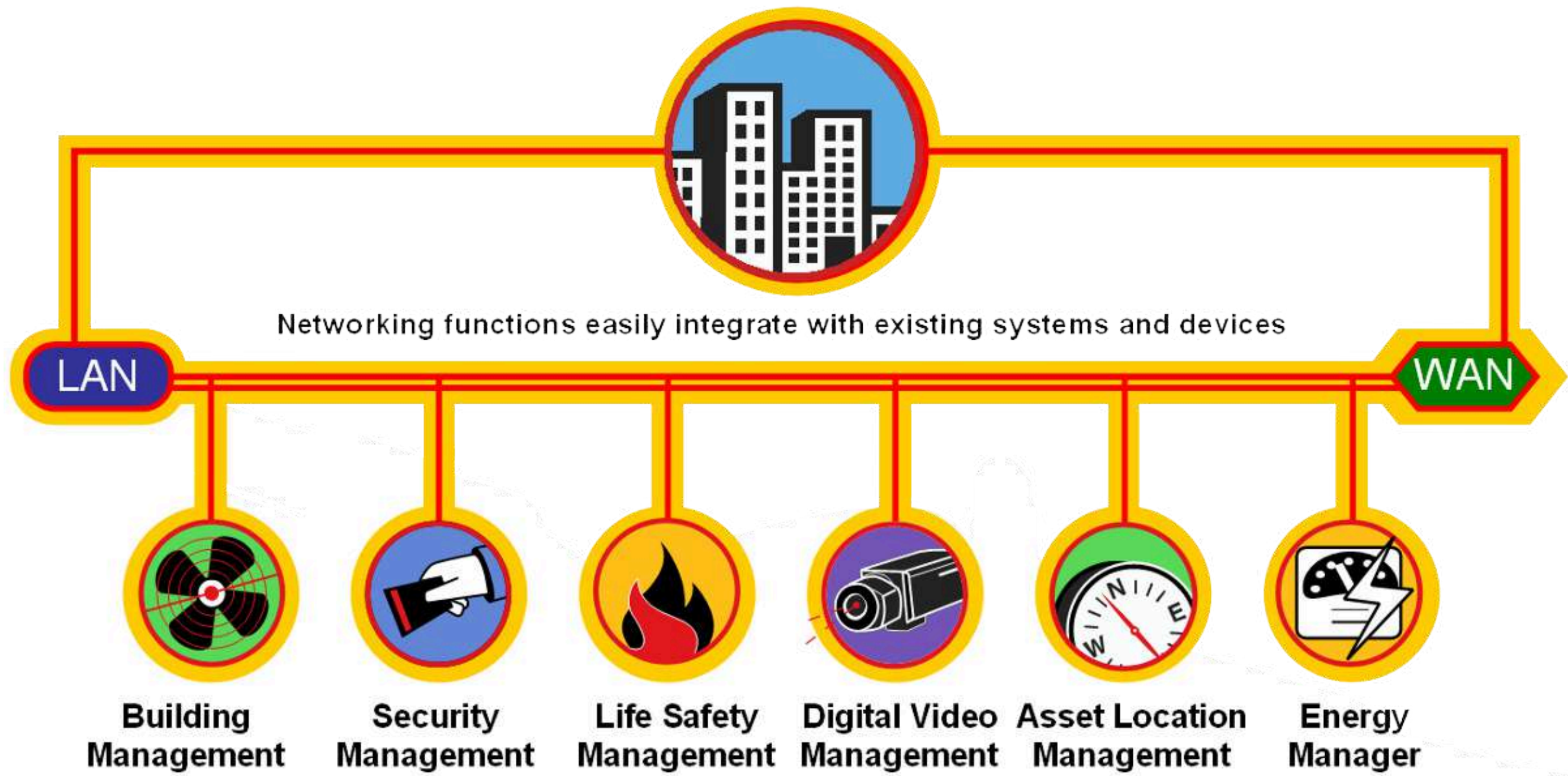
B B B B B
B
• B B B B
• v B B
• f B B
• o B B BB B
• B B BB B B



B B B UCB B C B B
B BT BCUVBU BBU B BC B B
B B B B B
B B B B
• B B B B B
• B B B B
• U BB
• B B B B B
• o B BB B
• U B B BB
• B B B B B B B B B
• T B B B
• B
• B BB BB B B B

B B

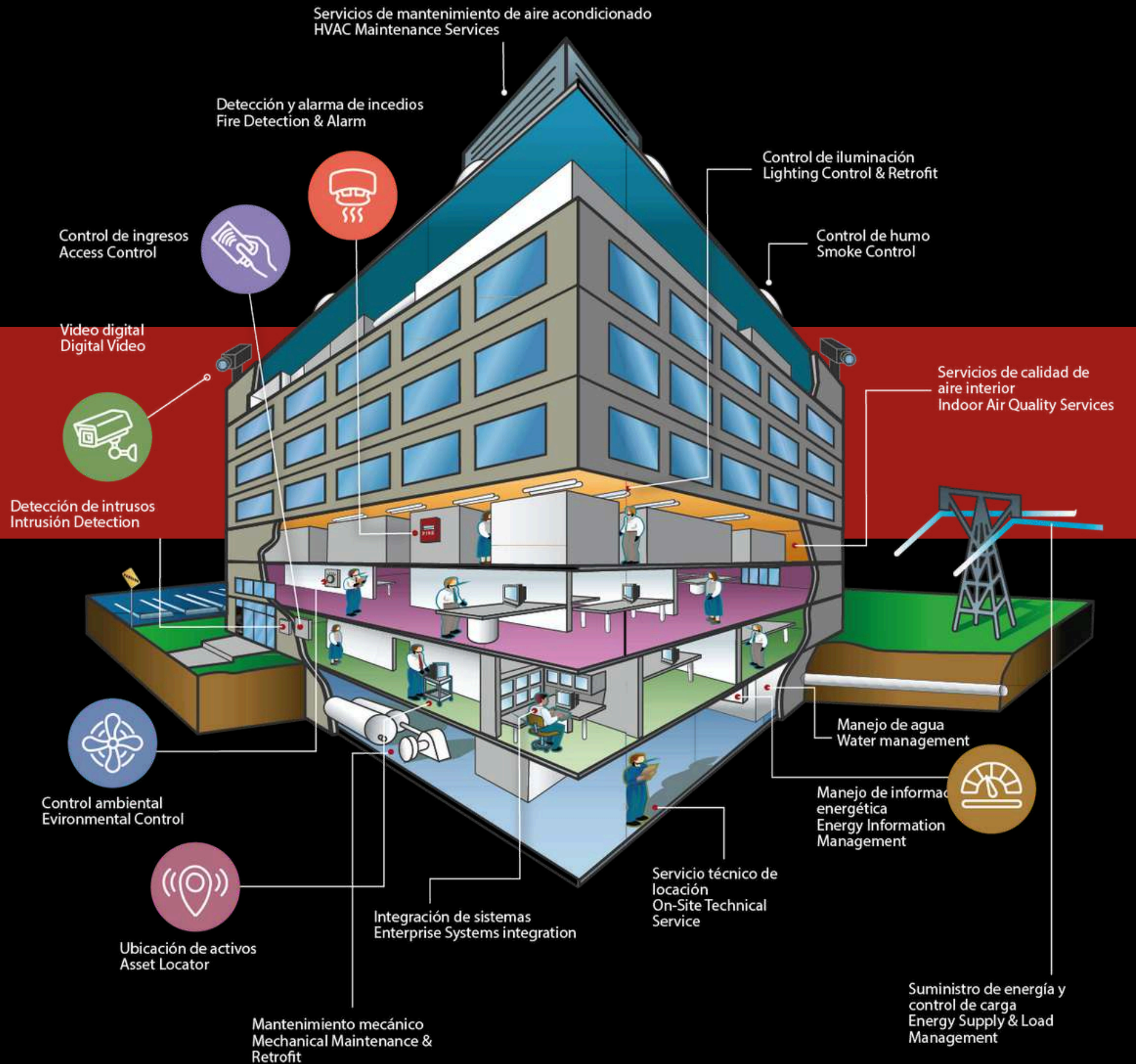
B

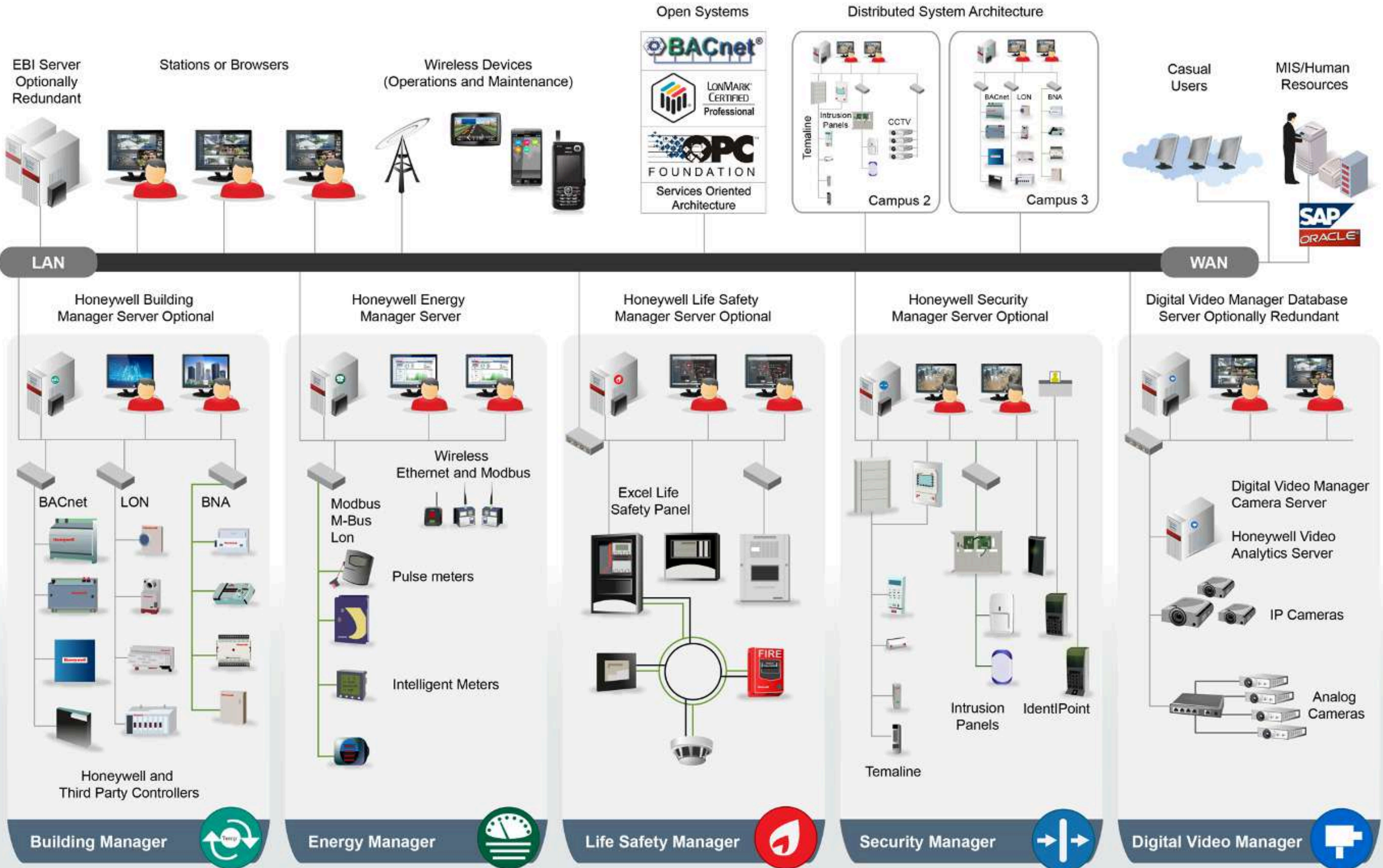


C

B B B
B B

B B
B B
B





C S CI

Nube y Conectividad



Sistemas de gestión de edificios



Controladores de automatización



Automatización de ambientes



Dispositivos de campo





CONTROLMATIC

PROYECTOS REALIZADOS

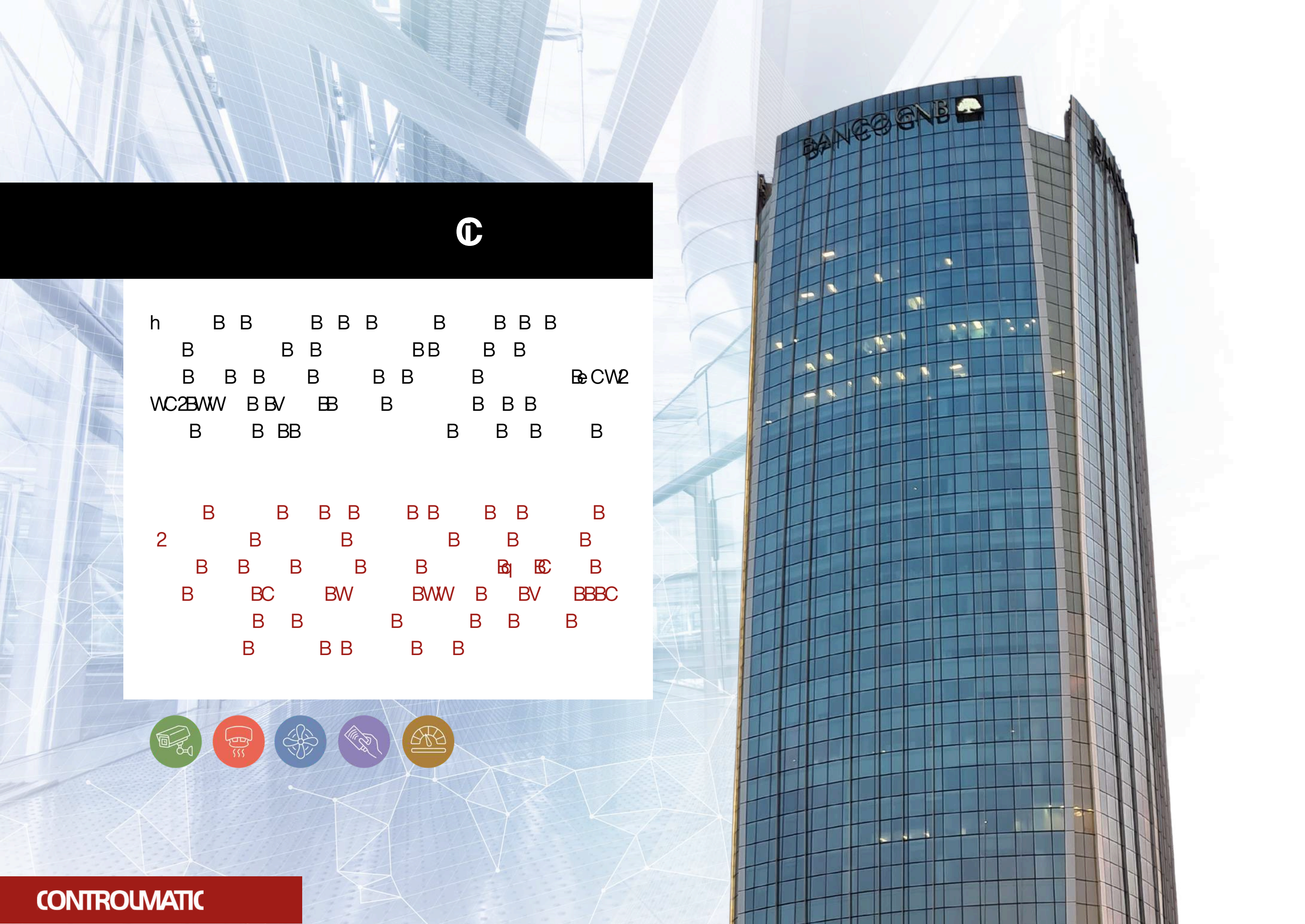
C

g B B BB B B B BB
B B B B B B B B
1 B B B cCU B UC1B UU
gr tCcB BT B B B B B
B B B B B B
B

1 B B B B B B B
gTB B B B B B B B
B B B B B B B
Bq BC B B B BC BU
B BU B BT B B B B
B B B B B B



Interbank



©

h B B B B B B B B B
 B B B BB B B
 B B B B B B B B CW2
 VC2BWV B BV BB B B B B
 B B BB B B B B

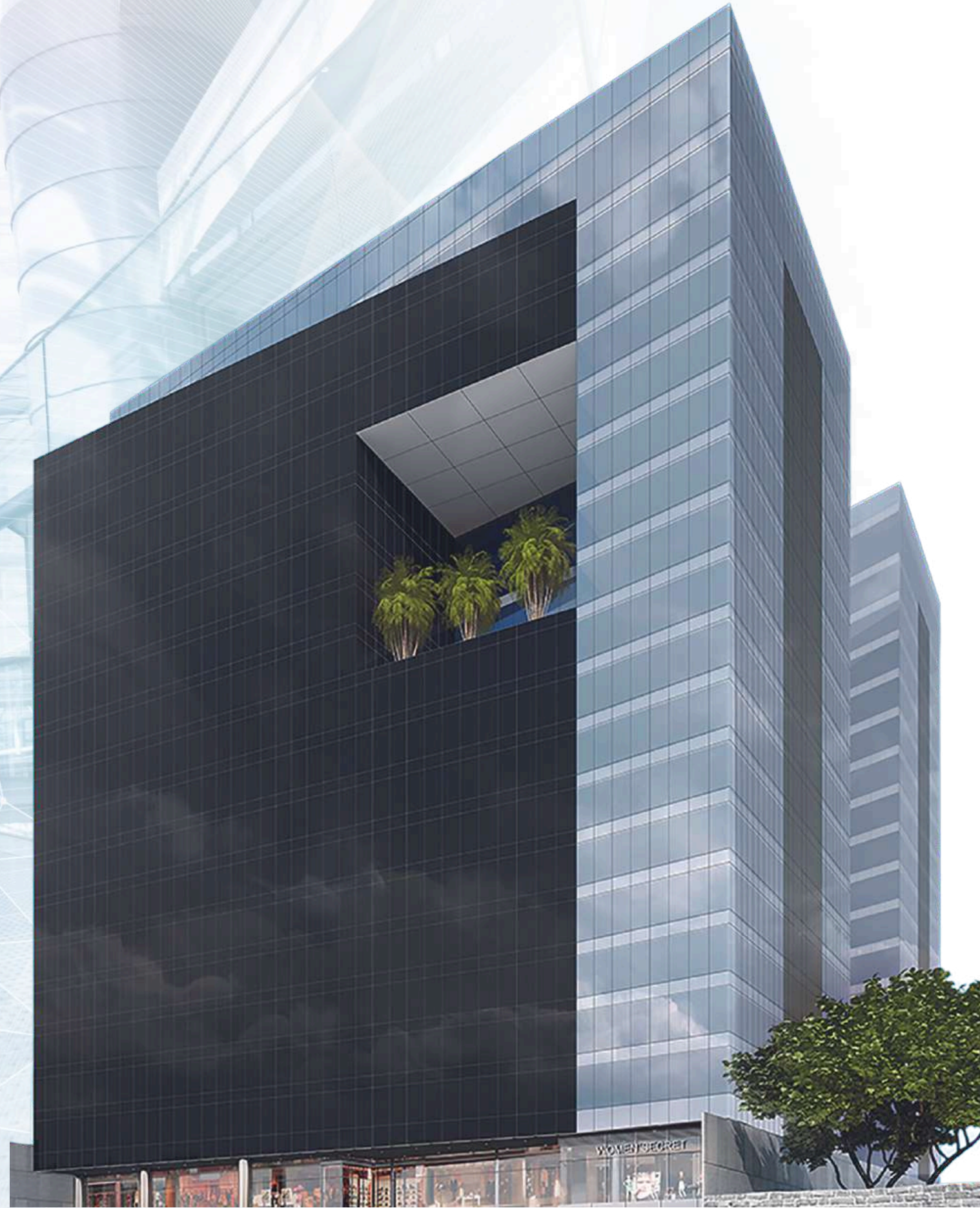
2 B B B B B B B B B
 B B B B B B B
 B BC BW BWV B BV BBBC
 B B B B B B B
 B B B B B



C C C

h B B B B B B B B B
BB B B B B B B
B B B B B B B
B B B B B B B B
V B B B B B B B

BV B B B B B B B
BVB B B B B B B
B B B B B B B B
B B B B B B B B
B B B B B B B



C C C C

2 B B B B B B
B B B B B B
B C W B A C B B V B B B B B
B B B B B B B

B B B B B BB
B B B B B B B
C B B B BC Bh Bg B
B B B BB B
B B B



í C C

B B B B B B B B B
B B B B B B B B B
WW B B B B B B B B B
B B B B B B B B B
W B B

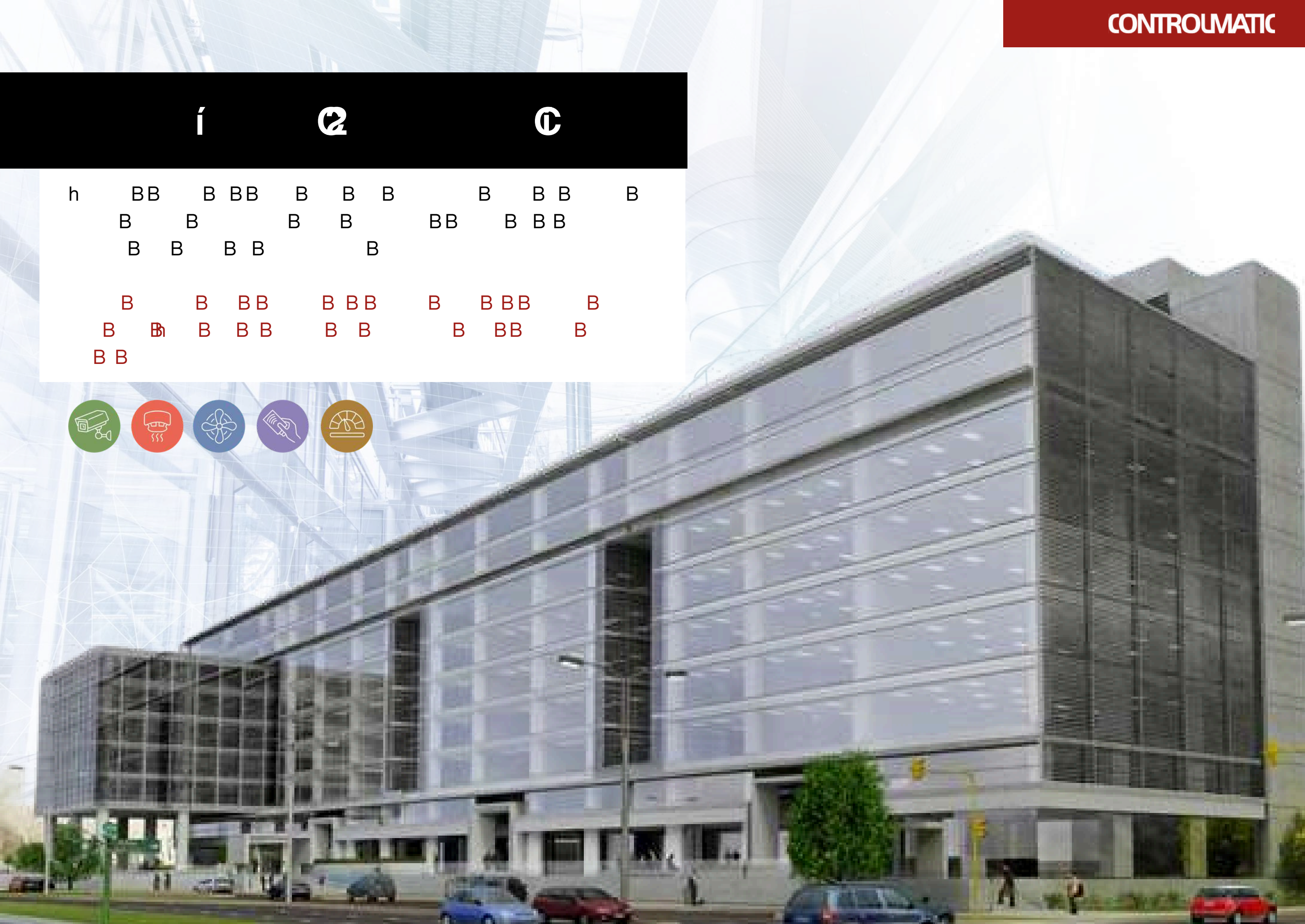
B B B B BB B B B B
B BW B B B BB
B C B B2 B B B B B
B BV B



í 2 C

h BB B BB B B B B B B B
B B B B BB B BB
B B B B B

B B BB B BB B BBB B
B B B BB B B B BB B
B B



I ©

f B B B B B B B B
B B B B B B B

S B B B B B B B
B B B B B B B



I C

f B B B B B BB BB
 B BB B B B
 B

BS B B B B B
 B B B B B



© C

f B B B B B B B
B B B B B B B
B B B

B B B B B BB
B B B B B



C

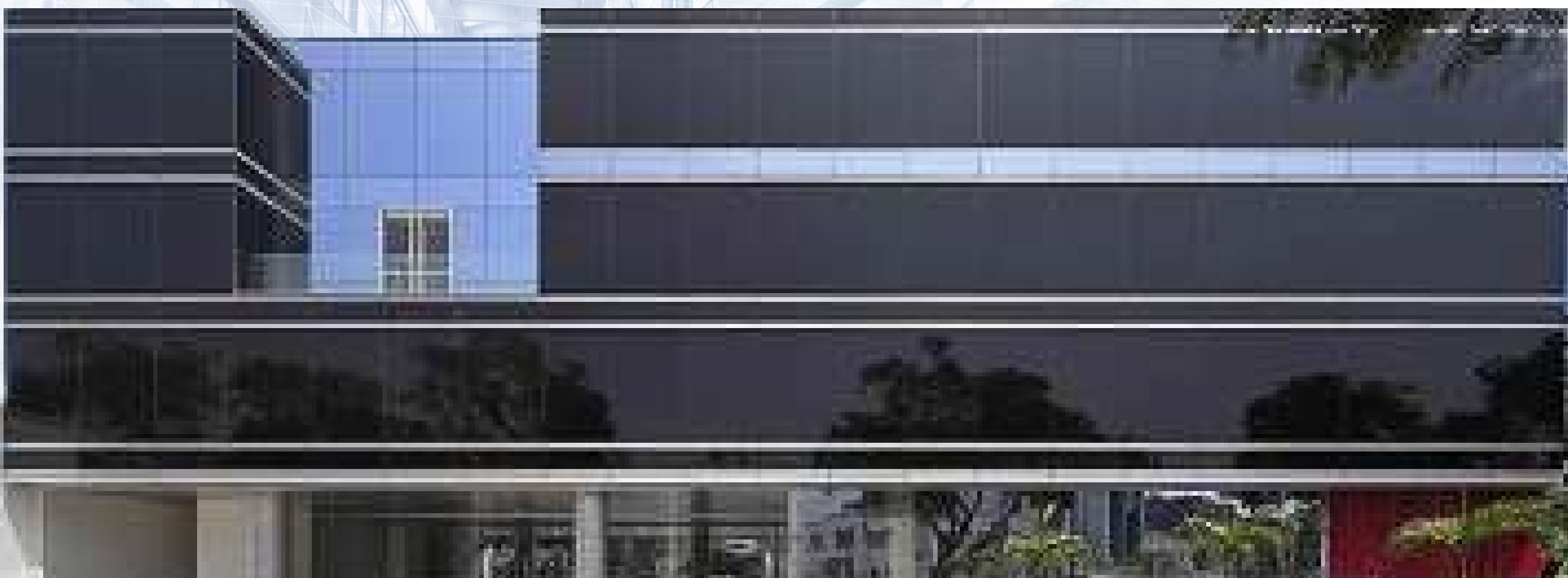
f B B B B BCT1BCT1BT B
 BB B B B B BB
B B B BBB

T B B B B B B B B
 BTT B B B B B B B
 B B B B B
 B B B B B



C

i B B B B ~~B~~ B BB B
 B B B ~~B~~ ~~B~~ B B B B
 C ~~B~~ B B B B B B
 BB B B B
~~B~~ B B ~~B~~ B B B B BB
 B B BC Ba Bi B
 B B B

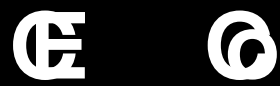


C C

i B B B B Bé Ca 3Ba C3Ba a
V B B B B B B B B B B
B B B B B B B B

a B ~~V~~ B B B B
t ~~CC~~ B B B ~~CC~~ Ba Ba a B
V B B B B B B B B B B
~~CC~~ B B B BB B





B B B B B
B B B BBB B B BB
B Ba Ba B B B

CB B B B B B B
BB B B B B B B
B Ba B B BB B

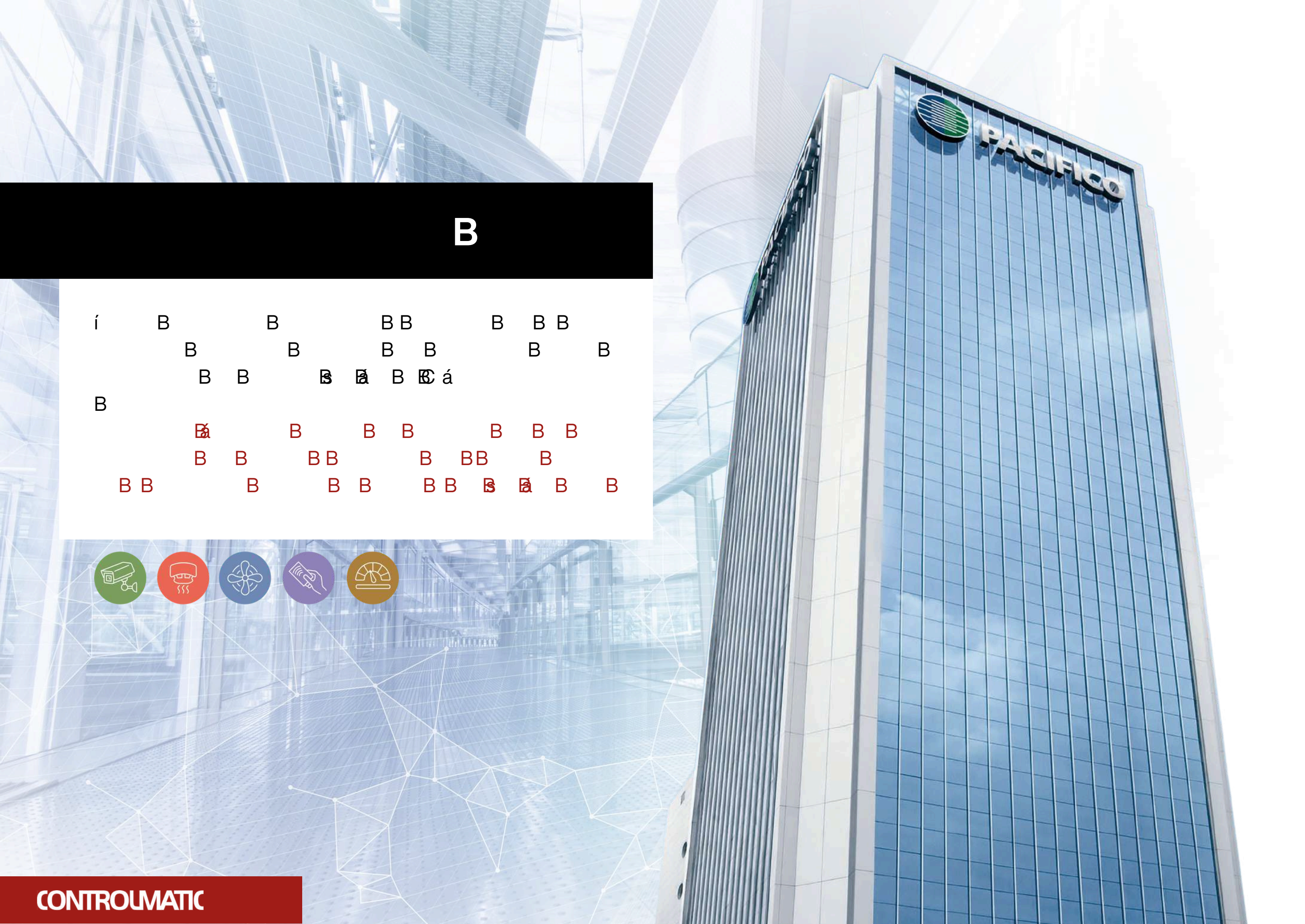


C

i B BB B B B BBB
B B B B B B B
B B B BB B B
Bi B B B B B B B
BééaB B B B B
B BB B B

a B B B B B B B
3 B BB B B B B B
B B B B B B
i B B B B B B B Bééa
B B B B B B B B B





B

í B B BB B B B
 B B B B B B
 B B B B B B á
 B
 B B B B B B B B
 B B BB B BB B
 B B B B B B B B B B B



f B B B B

í B B B B B B B B
a B B B B B B B
B B B B B B B B
B B B B B B B B
C B B B B B B B B B

B B B B B B B B
B B B B B B B B
B B B B B B B B
B B B B B B B B
B B B B B B B B
B B B B B B B B



f C

í B B B B B B BB B B
B B B B B B B
f B B B B B B B B
áá B B B

CB B B B B B B B
B B B B B B B B
B B B á B B B



f oB Be B

á B B B B Ba B B B B
 B B B B B B
 B B B BB B B
 B B B B

f B~~a~~ B B B B B
 B B BB B B B B
 B B B B B B



V B

í B B B B B Cá2
á C2á B BB B B
á Ba B B B B B
B B Bs BC B B B
C B á B B B BB
B



C

n B B B B B Cc B C B c
b B B B B B B B
 B B B B B B B B
 B B B

C Bb B Bx BC B B B B
 Bc Bcc B Bb B B
 B B B B B B B
 B B B B B B
 B



í C C

c B B B B B B B B
B B BB B B B B
B
B B B B B B B B
B B B B B B B
B B B B



t D

n B B B B B Cc Bc B C B
 BB B B B B B B
B B B B B BBB

 B B B B B B B B B C
c Bc B B B B B B B B B
 B B B B B B B
B B B B



D

C

C

C

B B B Bc B B B Bcc
BB B B B B B B B B
B B B B

C B B Bc B B
B B B BB B B B B B
B B B B B B B



D

n B B B B BnCc Bc c B Bc C
b B BB B B

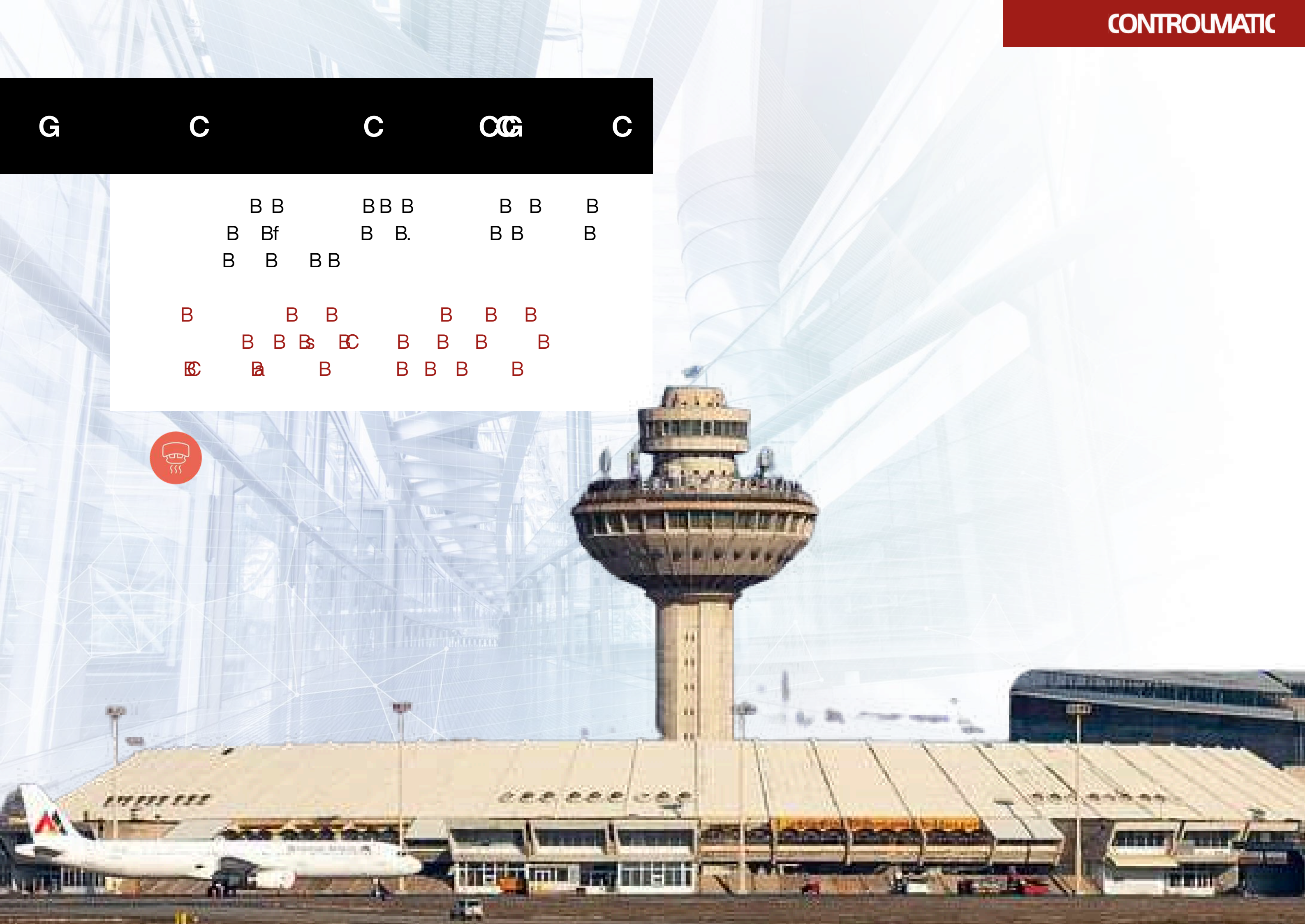
 B B B B B B B B B C
c Bc c B B B B B B B
 B



G C C C CG C

B B B B B B
B Bf B B. B B B
B B BB

B B B B B B
B B B B B B
B B B B B



G C

í B B B B B Ca. C. a BV
BB B B

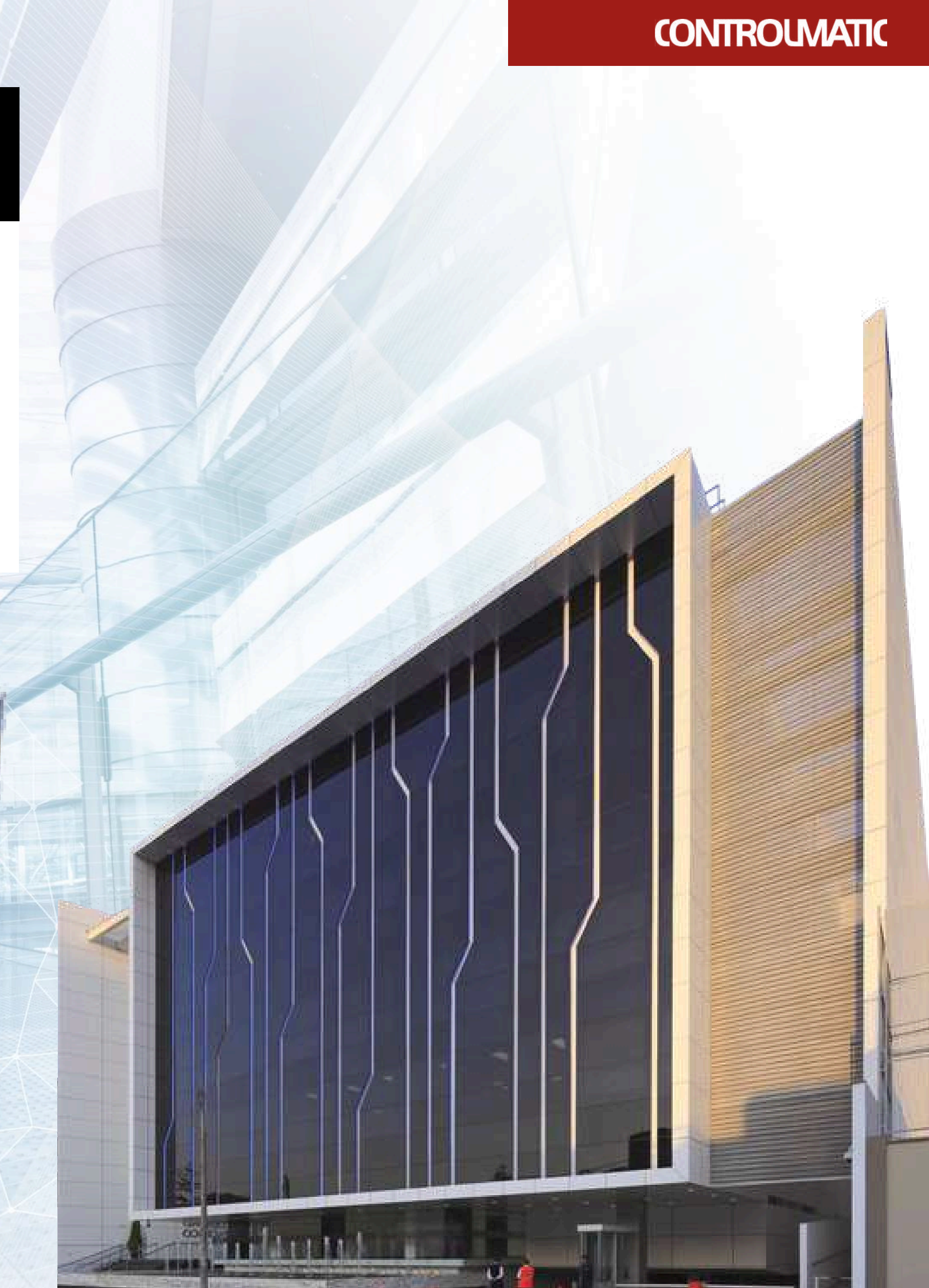
B BV B B BC B B B BEC
a a B BV B B B BBB



C C

í	B	B	B	B	B	B	B	B
	B	B		B	B	BB	B	B
		B	B	B	B		B	

W	B	B	B	B	B	B	B	B
	BC	B		B	BB	B	B	B
		B						





í B B B B B Ca. a B C. W
BB B B

B BW B B C B B B B C
a a B W B B B B B B



C C

B t B B B W B B
 B B B B a C . B B B
 B

t B W B B B W B B B B
 B B B B C B B
 B B B B



y B

í B B B B B B B B
BB B B B

B B B B B B B B
B BB B B B



y B B

í B B B B B Cá. C. á B
BB B B

B B B B B B B B B
á B á B B B B B B B
B



B

í B B BB B B B B B
B B B B B BB B
B B B B B B B
B B B B

á Ba B BB B B B B
BB B B B B BC B
B B B B B B
B BB B B



k k B B B B

í B B B B B B B B
B B B B B B B

áá

B B B BB B B BB B B
B B B B B B B BB
BB BB B áá BB B



k By B

á B BÍ B BÍ B
BB B B B BBB
B B B B B
r B B B B B B
B BB B B B B





t ©

m B B B B B B B B
B B B B B B B B
BmB B B B B B B
B B B B B B B

B B B B B B B B
B B B B B B B B
B B B B B B B B
B B B B
B





C

m B B B B B B B

 B hCc5BcC5Bcc Bb B B B B

 B B B B B B B BB B B

 B B B B B B BB B

v B B B B B B Bc B B B B

 B B B B B B



i © C © C

m B B B B B B B
B B B B B B B B
B B B B B B B B
B B B B B B B B
B B B B B B B B
B B B B B B B B

v B5 BB B B B B B B Bm
c B BC B B B B B
B B B B B B B B
B B B B B B B B
B B BC Bc Bc Bb B B B
B



C C Q Q C C C

m Bc B B B B B B B5 B
B B B B B B b B B
B B B B B B B B B B
5 B B B B B B Cc B B C
cc B B B B

B Bc B Bb B B
B B Bc c B b B B B B
B B B B B B B B Bv
C B B B C C Cc B B B



C C C

Bn B B B Cc B

m B B BB B B B





Ba B B BgCa Ba a BBaC BV
BB B B B

B BV B Bw EC B B B BBC
a Ba B BV B B B BBB



© C

B B B B Ca B Ba
aCa m B
B B B B a B B
B B B



C C C C

B B B B B B B B
a n

B B B B B B B B
B



C



Hotel donde instalamos los sistemas DACI, Seguridad, CCTV, y cableado estructurado.

Hotel Building with Fire Alarm and Life Safety, Security, CCTV and Structured Cabling System installed.



C C

BB B B B Ca Ca C Ca B
V B
BV B Bw BC B B B BC
a Ba B V



E E

B B B B B BB
B B
B B B B B B BB





n B B B B B B
B B B B B B B
B BB B B B B
B B B B
B B B B BB B B
B B B B B B B
B B B B B B B
B B B B B B
B B B B B B
B B B B B B



V E E

n B B B B B B Cc Cc Cc c Bb
BB B B

B B B B B B B BBC
c Cc B B B B B B B B B



V E

n B B B B B B B Cc Bc C Bc c Bb
BB B B

B B B B B B B BBC
c Bc B B B B B B B



E

c Bc B B B Cc Bc Bc Bb
 BB B B B

 B B B Bc B B B Bc
c Bc B B B B B BBB



E

y B B B B B B B B B
B B B B B B BB
B B B B B B B
B B B B B B B
BE B B BB B B B
B

